

# Work From Home Cyber Security Tips



## Enable multi-factor authentication (MFA)

MFA strengthens security by requiring a username and password PLUS a one-time code sent to your phone via SMS or an authentication app.

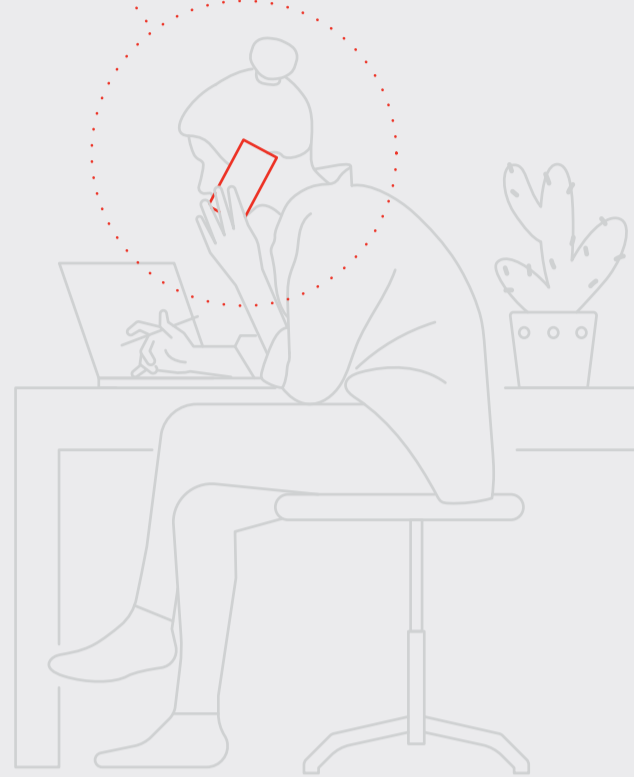


## Install the latest patches on all your devices

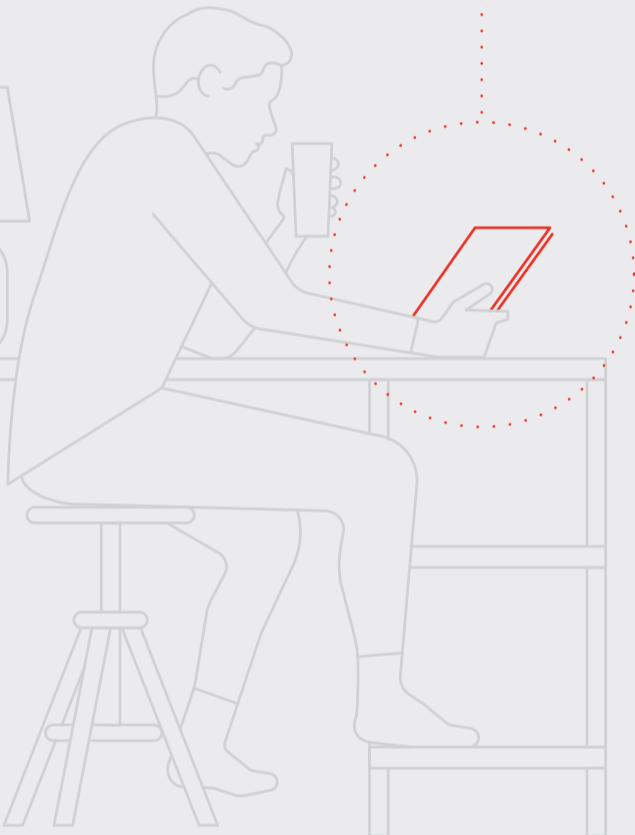
Ensure that devices, including smartphones, have the latest patches installed if you are responsible for installing them. This is a first aid kit for vulnerabilities.



## Avoid password reuse and never share your password



## Be very wary of suspicious emails



## Protect any sensitive online meetings

Whenever possible, protect meetings with a password. Ask participants to identify themselves and lock meetings after everyone has joined.



## Do not mix personal and business use of devices

Be very wary of suspicious emails and phone calls, especially where you are asked to visit a website, open an attachment or provide credentials.



## Safeguard your home network

Set complex Wi-Fi passwords and change default administrator credentials on devices.



## Be mindful of the sensitivity or classification of your conversations

When using collaboration tools (e.g. WhatsApp, LINEapp, etc.) be aware of what you share as attackers may use it to target you, your business and those that you know.

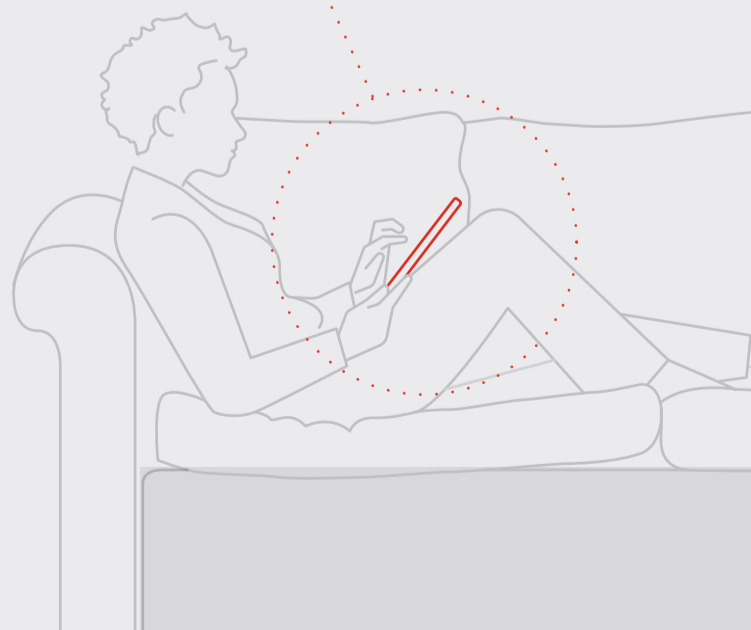


## Log off of devices after use

Physical security is just as important—log off of devices after use and store them somewhere out of sight (same for any sensitive paperwork).



## Avoid installing any unnecessary applications on laptops or smartphones



**About Kroll** Kroll is the leading global provider of risk solutions. For more than 45 years, Kroll has helped clients make confident risk management decisions about people, assets, operations and security through a wide range of investigations, cyber security, due diligence and compliance, physical and operational security and data and information management services. For more information, visit [www.kroll.com](http://www.kroll.com).

**About Duff & Phelps** Duff & Phelps is the global advisor that protects, restores and maximizes value for clients in the areas of valuation, corporate finance, disputes and investigations, cyber security, claims administration and regulatory issues. We work with clients across diverse sectors on matters of good governance and transparency. With Kroll, the leading global provider of risk solutions, and Prime Clerk, the leader in complex business services and claims administration, our firm has nearly 4,000 professionals in 25 countries around the world.